

# L-CAT<sup>®</sup> SHORE-TO-SHORE

Regional Force Projection Craft

- Amphibious Warfare
- Logistics Support
- Disaster Relief

NEW



# L-CAT® SHORE-TO-SHORE THE BEST OPTION FOR AMPHIBIOUS FORCES

L-CAT® Shore-to-Shore is a key enabler of stand-alone force projection on a regional scale and is suitable for a long-range amphibious, disaster relief and maritime security operations.



## Longe Range Operations

Autonomous force projection in maritime theaters



## Maritime Security

Presence and intervention capabilities for maritime states



## Disaster Relief

Fast delivery of emergency supplies and deployment of relief capabilities



Full autonomy. Great distances.



Detection & Tactical  
Communication  
Capabilities (incl. a Tactical  
Data Link)



Self-Defense Capabilities :  
REMOTELY OPERATED  
WEAPONS STATIONS (per client  
choice) & ARMOR  
Protection to vital areas



360° Situational  
Awareness



800 nautical miles  
Operational Range

# L-CAT® SHORE-TO-SHORE THE NEW ASSET FOR AMPHIBIOUS FORCES

Fast deployment of Forces & Equipment

L-CAT® is a sea proven design. L-CAT®s are in service in the French and Egyptian Navies. Following the L-CAT® Ship-to-Shore version, this is the 100% “Shore-to-Shore” version.

2008



L-CAT® PROTOTYPE

2009



L-CAT® SHIP-TO-SHORE

2011-2016

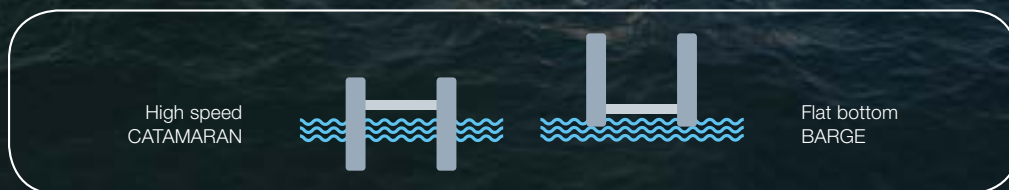


FRENCH & EXPORT ORDERS

2016



L-CAT® variable draft system: a unique design



L-CAT® SHORE-TO-SHORE

# FORCE PROJECTION FROM THE SEA

- Highly capable fast landing craft
- Various loads and mission modules
- Maximum tactical advantage



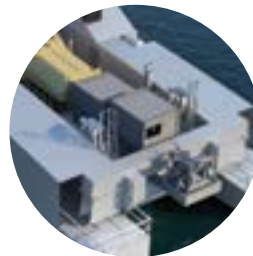
Main Battle Tank & Heavy armored vehicles



AAV / amphibious vehicles



Small Watercraft base ship for Special Operations

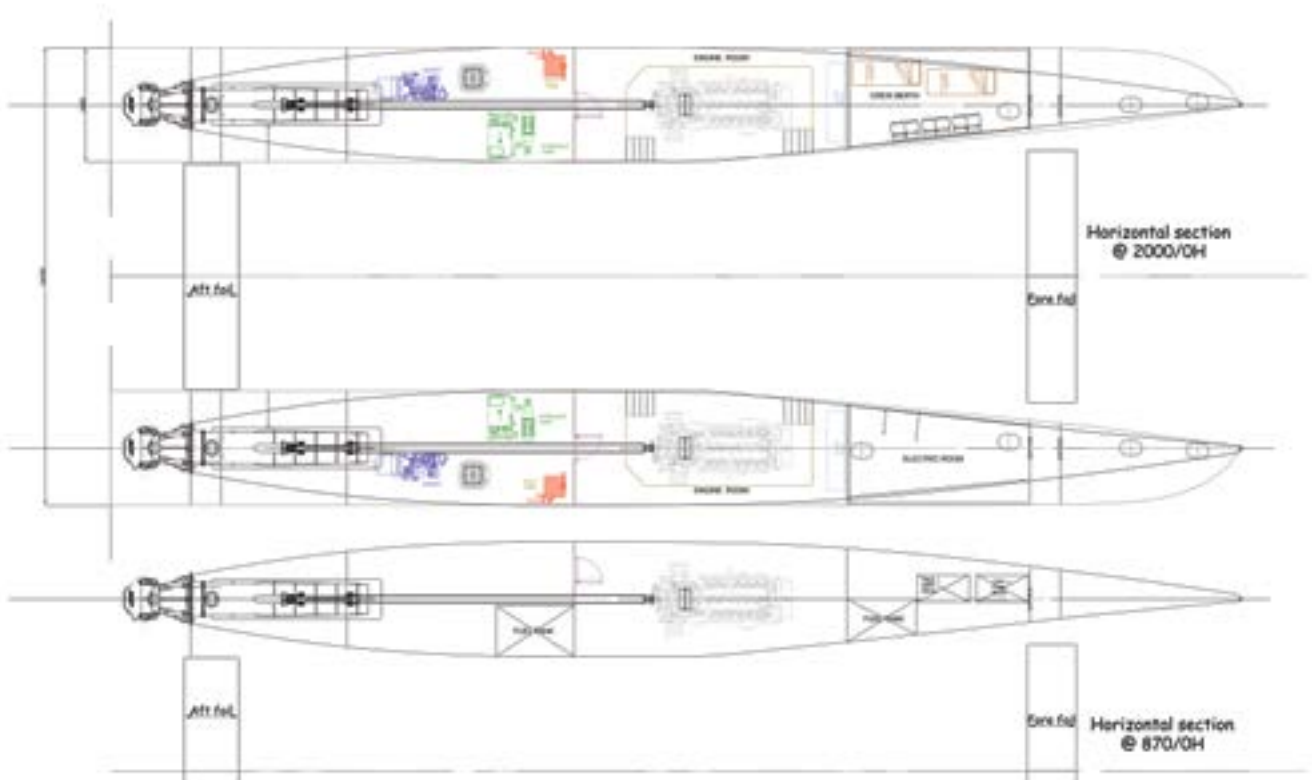
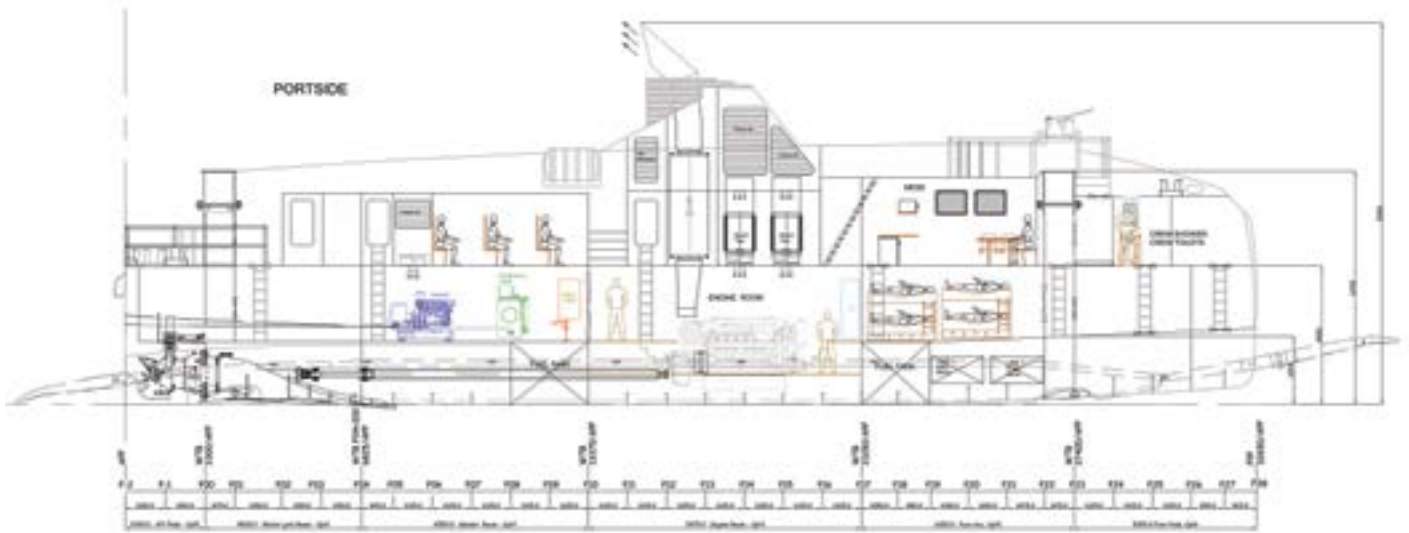


Anti-Submarine Warfare (CAPTAS-1)



Disaster Relief & Logistics equipment







## SPEED

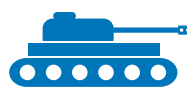


**15** KNOTS  
FULLY LOADED



**22** KNOTS  
LIGHT SHIP

## PAYLOAD



**1** MAIN  
BATTLE TANK



**100**  
TONNES

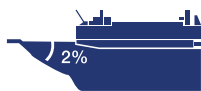


LOADING AREA  
**127 m<sup>2</sup>**

## BEACHING



**DRAFT**  
0.95 m  
Loaded Ship



**GRADIENT**  
2%

## RANGE



**1000 NM**  
Light Ship



**800 NM**  
Full load

### MAIN CHARACTERISTICS

Designer / Contractor ..... CNIM  
 Length overall ..... 32.6 m  
 Breadth waterline ..... 13.2 m  
 Max draft ..... 2.35 m  
 Landing draft ..... 0.95 m

### PROPULSION

2 x 2 500 kW main engines  
 2 x 80 kW Gensets  
 2 x Waterjets

### STANDARDS

SOLAS, IMO, NATO Naval Ship Code, HSC

### CAPACITIES

Fuel ..... 22 m<sup>3</sup>  
 Fresh water ..... 1.3 m<sup>3</sup>  
 Crew ..... 8 (4 berths)  
 Troops ..... 54 seats

### OPERATION MANAGEMENT

Depending on Navy Requirements: IFF, tactical network connectivity, Mission Management System, etc.





**3,000**

employees



**727 million €**

revenues in 2015



**61.3%**

from export



**160 years**

of track record in Defense

## L-CAT<sup>®</sup> SHORE-TO-SHORE

L-CAT<sup>®</sup> is a **fast and innovative landing craft** whose characteristics are adapted to the necessities of modern amphibious warfare

L-CAT<sup>®</sup> Shore-to-Shore can operate with or without any coastal infrastructure: port, quay, slipway, beach. It has a long range in order to ensure, with full autonomy and independence, a fast deployment of troops, vehicle and equipment from their homeport to the objective.

The L-CAT<sup>®</sup> Shore-to-Shore is tactically autonomous system with its own communication, detection & surveillance systems.

Going beyond amphibious operations, it responds perfectly to current **maritime security** needs, as well as to **civil assistance** requirements, such as the evacuation of civilian populations from disaster-stricken areas.

Credits: CNIM, Marine Nationale, C.Luu@Marine Nationale, S.Ghesquiere@Marine Nationale, M.Brebel@Marine Nationale, S.Chenal@Marine Nationale.

# ENIM

### Headquarters

35, rue de Bassano  
75008 Paris (France)

Phone: + 33 (0)1 44 31 11 00

[www.cnim.com](http://www.cnim.com)