

# L-CAT<sup>®</sup> SHIP-TO-SHORE

High Speed Naval Connector

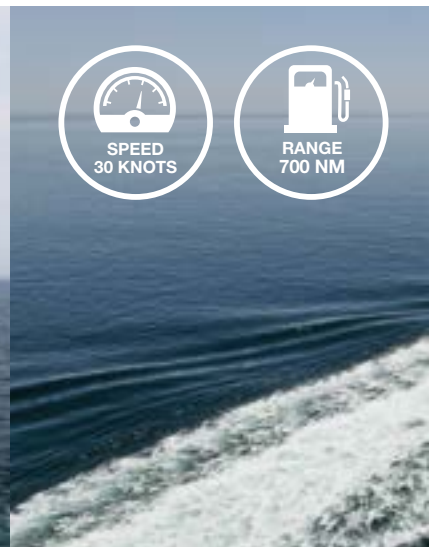
- Amphibious Warfare
- Logistics Support
- Disaster Relief

SEA PROVEN

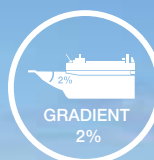


# L-CAT<sup>®</sup> SHIP-TO-SHORE THE IDEAL NAVAL CONNECTOR TO COMPLETE YOUR

FROM THE SHIP...



...TO THE SHORE



AND BACK



# OUR MISSION

« Over the horizon » amphibious operations  
Deploying Forces & Equipment



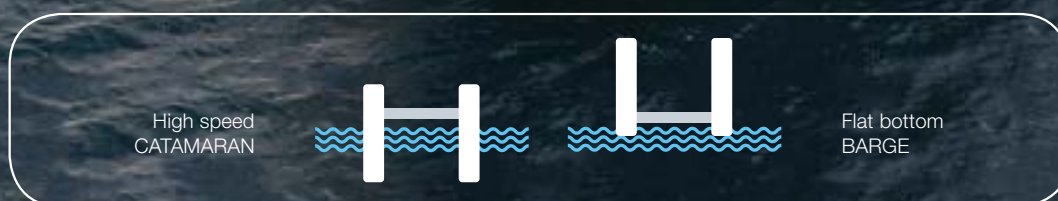
April 2015, 44 nationals taken out of harm's way

# L-CAT<sup>®</sup>, A SEA PROVEN AMPHIBIOUS CRAFT

- In service since 2011
- French & Egyptian Navies
- Worldwide deployments



L-CAT<sup>®</sup> variable draft system: a unique design



**Excellent beaching capability**  
up to 2% gradient



**Quay & slipway**



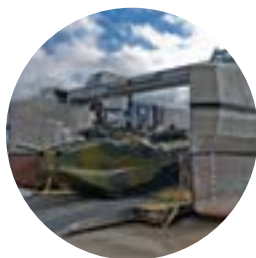
**Door-to-door operations**  
with the base ship and any amphibious ship

# FORCE PROJECTION FROM THE SEA

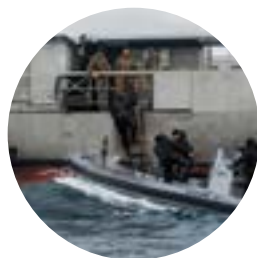
- Highly capable fast landing craft
- Various loads and mission modules
- Maximum tactical advantage



Main Battle Tank & Heavy armored vehicles



AAV / amphibious vehicles



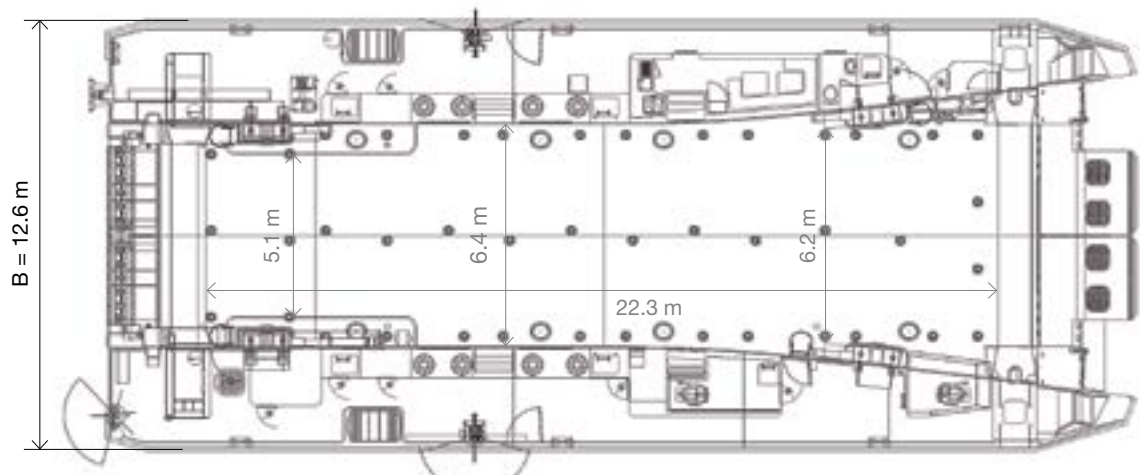
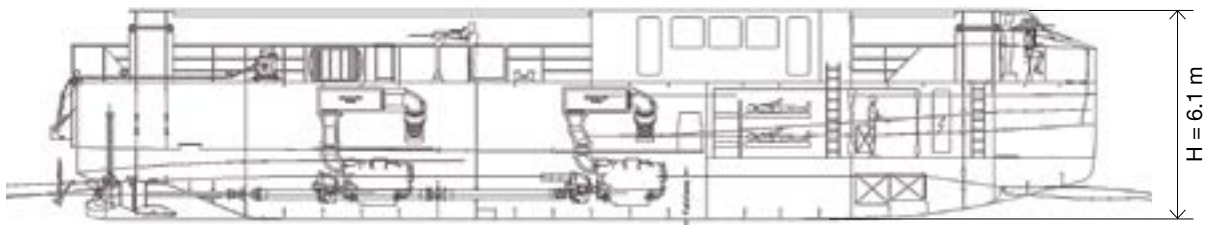
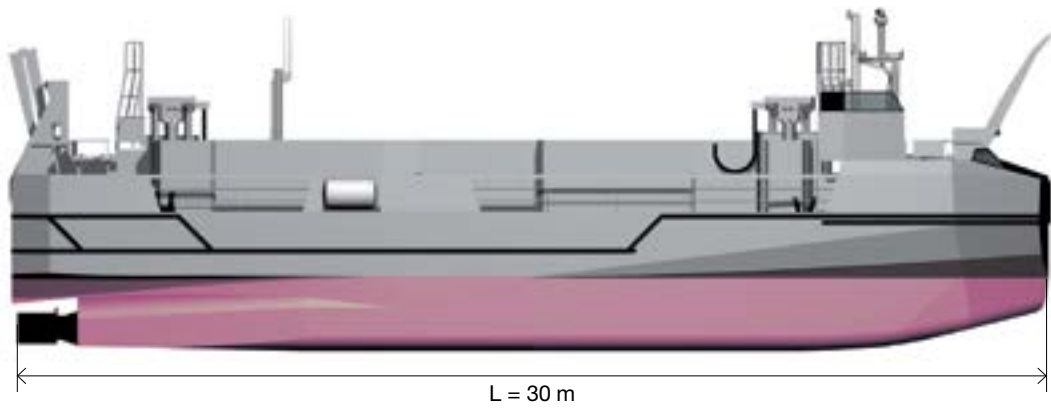
RHIBs



Anti-Submarine Warfare (CAPTAS-1)



Disaster Relief & Logistics equipment





## SPEED

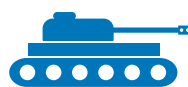


**18** KNOTS  
FULLY LOADED



**30** KNOTS  
LIGHT SHIP

## PAYLOAD



**1** MAIN  
BATTLE TANK



**80**  
TONNES

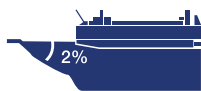


LOADING AREA  
**127 m<sup>2</sup>**

## BEACHING



**DRAFT**  
1 m loaded ship



**GRADIENT**  
2%

## RANGE



**700 NM**  
LIGHT SHIP



**500 NM**  
LOADED SHIP

## MAIN DIMENSIONS

Designer / Contractor.....CNIM  
 Length overall.....30 m / 98 ft  
 Beam overall.....12.60 m / 41.3 ft  
 Depth (to main deck).....4 m / 13 ft

## DRAFTS

Lightship catamaran.....1.8 m / 5.9 ft  
 Lightship landing.....0.8 m / 2.5 ft  
 Fully loaded catamaran.....2.4 m / 7.9 ft  
 Fully loaded landing.....1 m / 3.37 ft

## PROPULSION

4 x High Speed Diesel Engines  
 4 x Waterjets

## CAPACITIES

Fuel.....22 m<sup>3</sup>  
 Crew.....4 - 8 pers  
 Trained personnel.....40 pers  
 Container loading.....4 KC20'

## CLASS & SERVICE NOTATIONS

- Certified by Bureau Veritas
  - HULL
  - MACH
- Special Service  
 Unrestricted navigation: Operating area notation: Significant wave < 4 m (Sea State 5 Nato)
- ALM



**3,000**

employees



**727 million €**

revenues in 2015



**61.3%**

from export



**160 years**

of track record in Defense

## L-CAT<sup>®</sup> SHIP-TO-SHORE

L-CAT<sup>®</sup> is a **fast and innovative landing craft** whose characteristics are adapted to the necessities of modern amphibious warfare :

- **Speed** for rapid loading/unloading to and from its base ship and quick maneuver to the objective, allowing for a faster pace of operations.
- **Autonomy** for over-the-horizon maneuver, allowing the base ship to remain safely beyond the horizon without compromising operational success.
- **Payload capacity** to carry any relevant tactical package to the objective in an efficient manner

L-CAT<sup>®</sup> is a sea & combat proven ship. It is in active service since 2011 in the French Navy and since 2016 in the Egyptian Navy. It proves each day its ability to support the Armed Forces on a global scale for both military and civilian assistance operations.

L-CAT<sup>®</sup> can deploy either a fully motorized infantry platoon complete with its vehicles and equipment, a single heavy (M1, Leopard 2, Leclerc) Main Battle Tank, or 80 tons of military or disaster relief equipment.

**ENIM**

**Headquarters**

35, rue de Bassano  
75008 Paris (France)

Phone: + 33 (0)1 44 31 11 00

[www.cnim.com](http://www.cnim.com)