



LCA

LANDING CRAFT ASSAULT

Operational support for Ground Forces

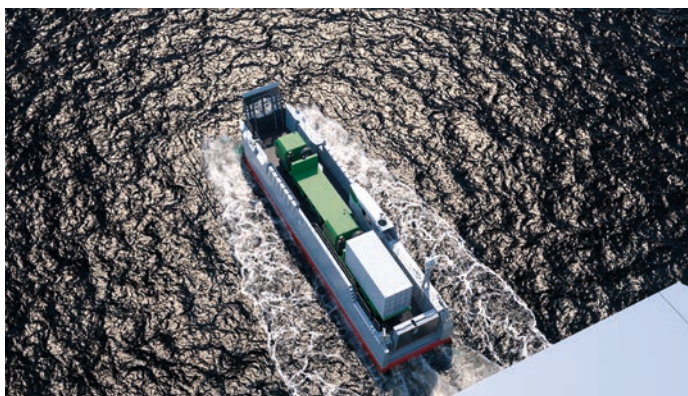
LCA

LANDING CRAFT ASSAULT

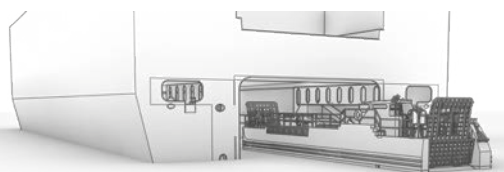
Operational support for Ground Forces

Adaptable to any type of amphibious ship, NATO or Makassar class, the LCA is designed to efficiently transfer equipment and troops ashore.

Robust, reliable, with excellent mobility and maneuverability, the LCA lands and reembarks Ground Forces in record time during amphibious assault operations.



- ▲ Operated from NATO or Makassar class well decks
- ▲ High payload capacity
- ▲ Efficient transfer
- ▲ Adapted to modern Land Forces vehicles
- ▲ Very shallow water operations



LCA

▲ PERFORMANCES	
Mothership interface	
Operated from NATO well deck	✓
Operated from Makassar class well deck	✓
Virtual reality docking training	✓
Navigation	
Very shallow water operations	★ ★ ★
Speed (loaded/unloaded ship)	★
Operational range	★
▲ MISSIONS	
Amphibious Operations	
Vehicles landing	★ ★
Civilian logistics	★ ★
Harbor / Beach interface	★ ★
Deployment of RHIBs / Interceptors	★
Beach reconnaissance assistance	★

↔	Length / Width	23 to 29 m / 6.4 m
🚢	Draft at full load	1.3 m
🚢	Speed at full load / Light ship	13 kts / 18 kts
🌊	Sea state	5
80	Normal / Maximum payload	65 t* / 80 t*
📐	Platform area	115 m ² *
🌊	Range	300 nm
🌐	Weapons	3 x 12.7

*29 m long LCA